



AC1350 3G/4G Wireless Dual Band Router

Enjoy 3G/4G Sharing with
Powerful AC1350 Wi-Fi Speed



TL-MR3620



3G/4G Sharing



450Mbps + 867Mbps
Dual Band Wi-Fi



MU-MIMO Technology for
2x Faster Performance

Highlights

Household Wi-Fi at Streaming Speeds

Press play and forget about buffering with the TL-MR3620. Thanks to dual Wi-Fi bands, you can run more of your devices at the same time without interruption. The strong 2.4GHz (450Mbps) Wi-Fi band is perfect for sending emails, browsing the web, and listening to music. The router's 5GHz band reaches 867Mbps so you can game online and stream in HD simultaneously.

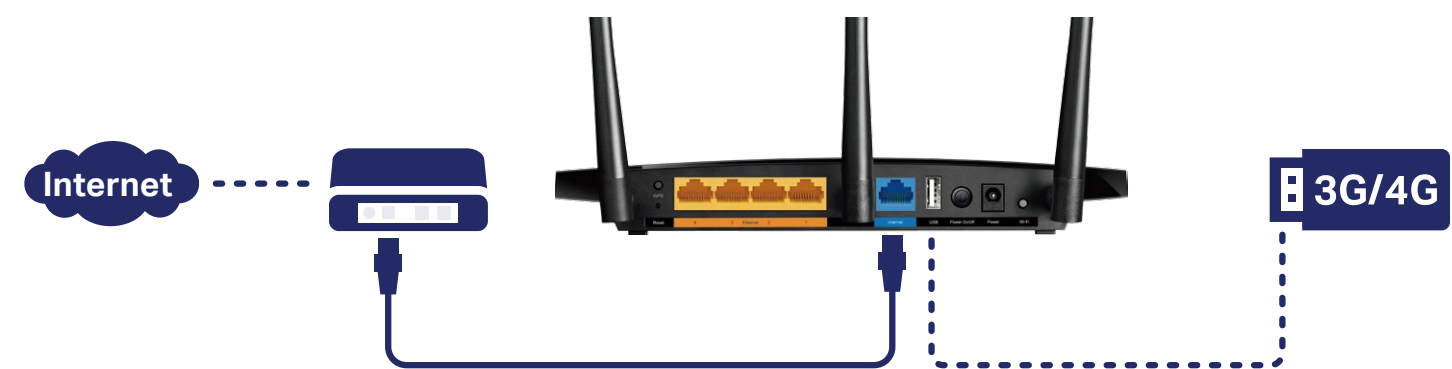
📶 2.4GHz 450Mbps

📶 5GHz 867Mbps



Ensured Internet Access

With both 3G/4G and WAN connectivity, the TL-MR3620 always keeps you online. Take advantage of flexibility when choosing and setting up your network, and share a 3G/4G mobile broadband connection through wired or wireless connections.



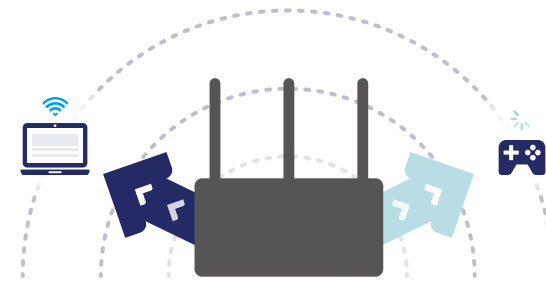
Highlights

MU-MIMO for 2× Faster Connections

MU-MIMO technology allows the TL-MR3620 to serve 2 devices at once, reducing wait time and increasing Wi-Fi throughput.



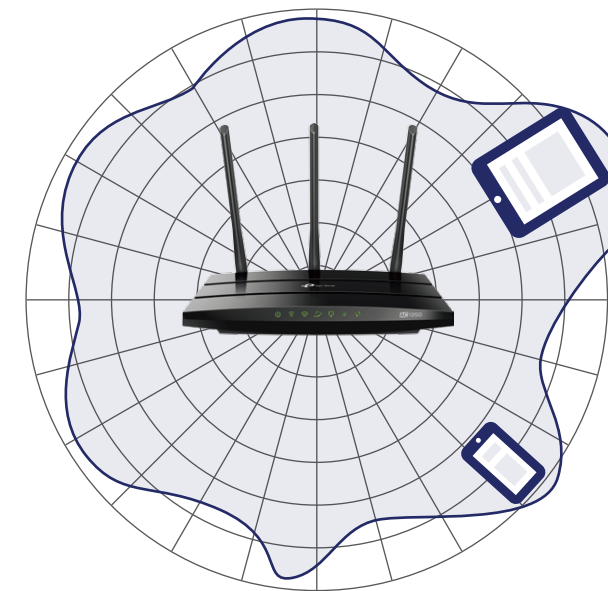
MU-MIMO Router
Simultaneously sends data to multiple devices



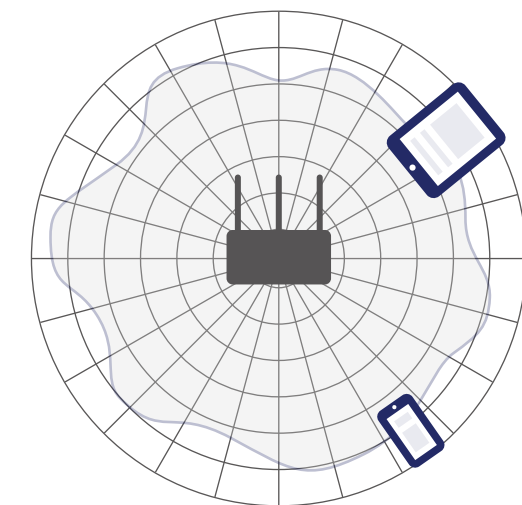
Traditional Router
Sends data to one device at a time

Beamforming for Better Coverage

Beamforming technology detects the location of your connected devices and concentrates the TL-MR3620's Wi-Fi towards them to create stronger overall connections.



TL-MR3620



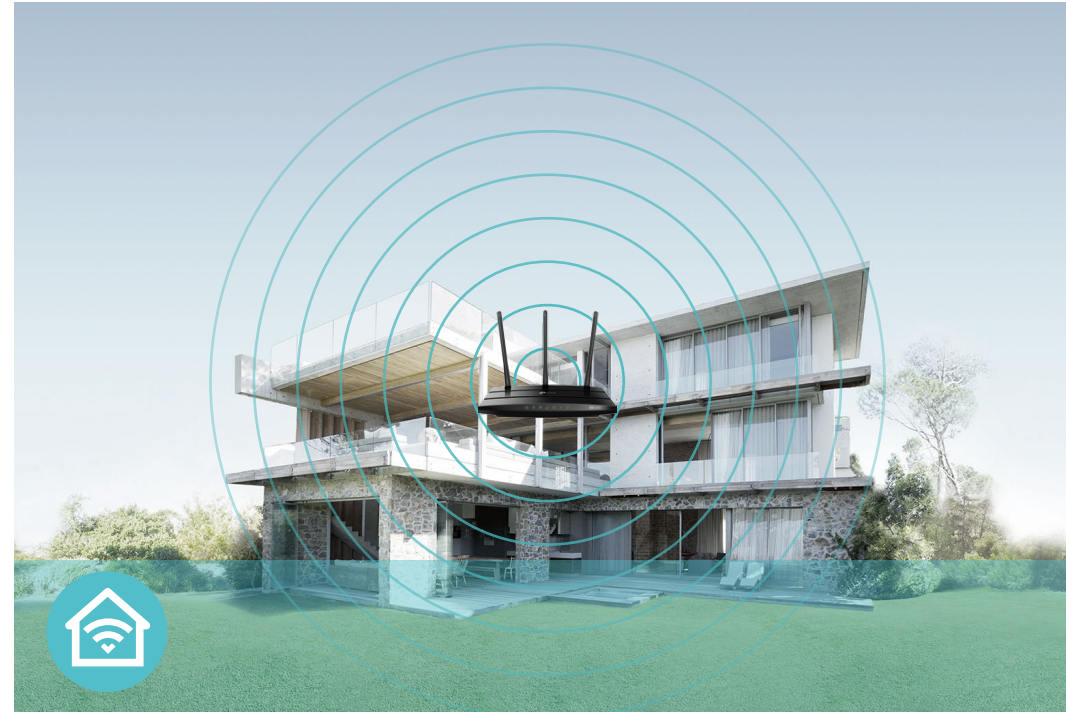
Regular Router

Features



Speed

- **Ultimate Wireless Speed** – Combined wireless speeds up to 450 (over 2.4GHz) and 867 (over 5GHz) Mbps
- **MU-MIMO Technology** – Simultaneously exchanges data with several devices, achieving speeds which are 2x faster than standard AC routers
- **Support 802.11 ac** – Provides a data transfer rate 3 times faster than 802.11n for each stream



Wi-Fi Range

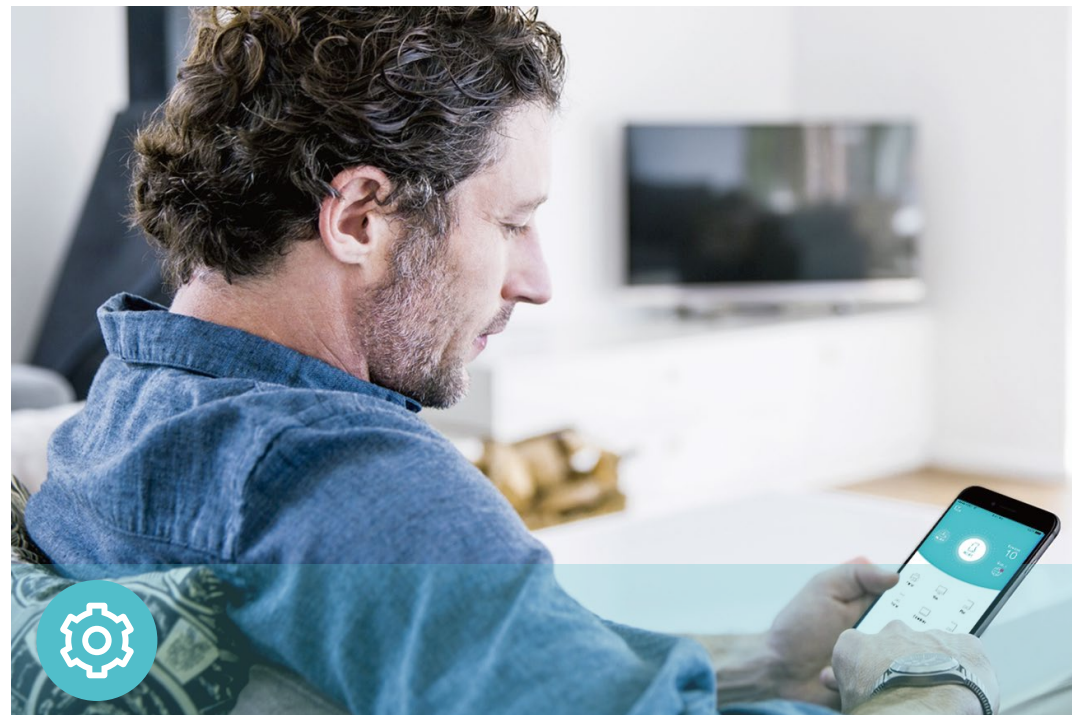
- **Ultimate Range Wi-Fi** – 3 dual band high-performance antennas with a high-powered amplifier ensure the widespread Wi-Fi coverage and a stable connection
- **Wi-Fi with Beamforming** – Beamforming technology locates the connected devices and further improves the TL-MR3620's range and the signal strength to each mobile device, delivering a more reliable and efficient wireless connection



Reliability

- **Simultaneous Dual Band** – Separate Wi-Fi bands enable more devices to connect to your network without a drop in performance
- **Easy Bandwidth Management** – IP-based Bandwidth Control makes it easier for you to manage the bandwidth of connected devices

Features



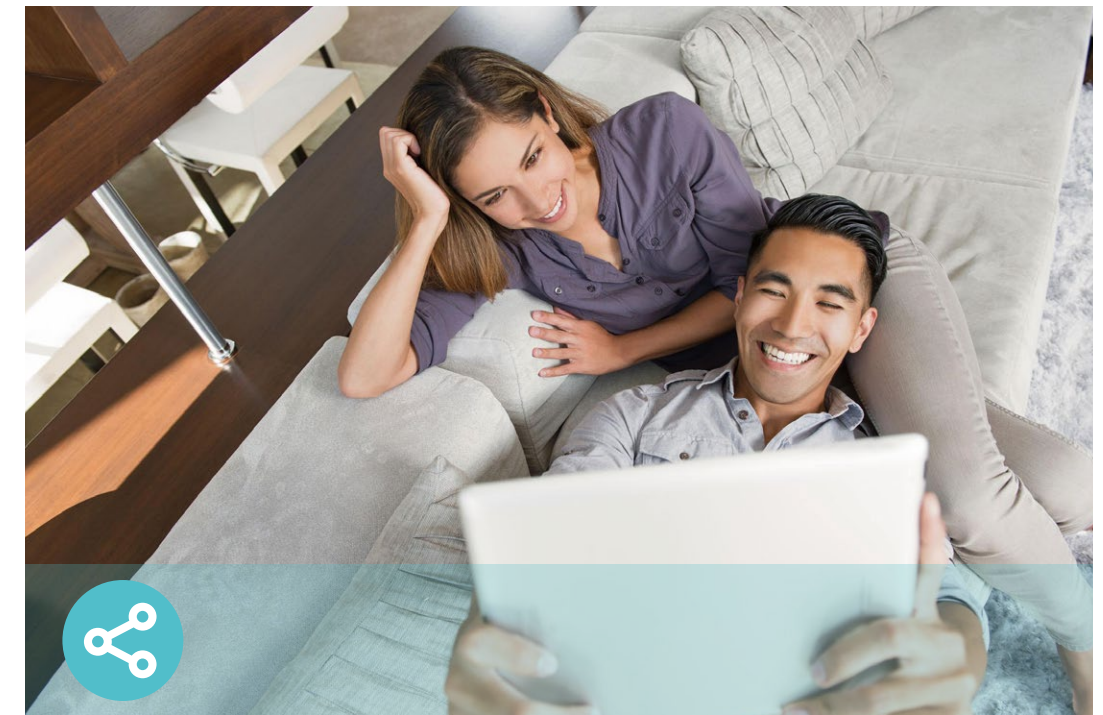
Ease of Use

- Intuitive Web UI – Ensures quick and simple Installation without hassle
- Fast Encryption – One-touch WPA wireless security encryption with the WPS button
- Wi-Fi On/Off – Turn on/off wireless radio as needed using the Wi-Fi On/Off button
- Power On/Off – Conveniently power on or off your router as required
- Hassle-free Management with Tether App – Network management is made easy with the TP-Link Tether App, available on any Android and iOS device



Security

- Guest Network – Keep your main network secure by creating a separate network for friends and visitors
- Access Control – Establish a whitelist or blacklist to allow or restrict certain devices to access the internet
- Parental Controls – Restrict internet access time and contents for children devices
- VPN Server – IPSec VPN makes it easy to set up a secure connection between your private network and the internet
- Encryptions for Secure Network – WPA-PSK and WPA2-PSK encryptions provide active protection against security threats



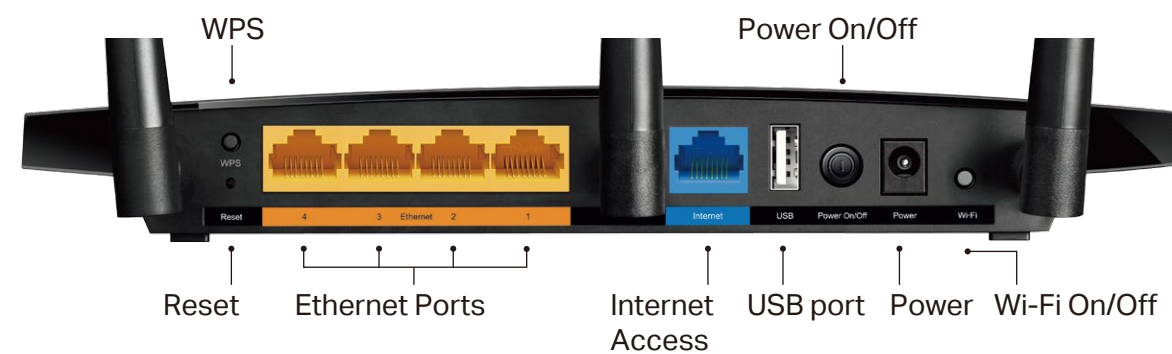
Easy Sharing

- USB Port for Fast Sharing – With the USB port, you can access and share a printer as well as your files and media locally. Through the router's FTP server, you can also access your files and media from network devices remotely
- Built-in Print Server – Allows wireless printing from multiple computers (works in conjunction with a USB printer)
- Built-in Media Server – Allows you to play music, watch videos and view photos from any device on your network

Specifications

Hardware

- Ethernet Ports: 4 10/100Mbps LAN Ports, 1 10/100Mbps WAN Port
- USB Ports: 1 USB 2.0 Port
- Buttons: Wi-Fi Button, Power On/Off Button, Reset Button, WPS Button
- Antennas: 3 Fixed Omni Directional Antennas
- External Power Supply: 12VDC/1A
- Dimensions (W x D x H): 8.9 × 5.8 × 1.3 in (225 × 148 × 33 mm)



Wireless

- Wireless Standards: IEEE 802.11ac/n/a 5GHz, IEEE 802.11b/g/n 2.4GHz
- Frequency: 2.4GHz and 5GHz
- Signal Rate: 867Mbps at 5GHz, 450Mbps at 2.4GHz
- Transmit Power:
 - CE: <20dBm (2.4GHz), <23dBm (5GHz)
 - FCC: <30dBm (2.4GHz & 5GHz)
- Reception Sensitivity:
 - 5GHz:
 - 11a 6Mbps: -94dBm, 11a 54Mbps: -76dBm
 - 11ac HT20: -68dBm, 11ac HT40: -64dBm, 11ac HT80: -60dBm
 - 2.4GHz:
 - 11g 54M: -77dBm, 11n HT20: -73dBm, 11ac HT40: -71dBm
- Wireless Function: Enable/Disable Wireless Radio, WDS Bridge, WMM, Wireless Statistics
- Wireless Security: Enable/Disable SSID Broadcast, 64/128-bit WEP, WPA/WPA2, WPA-PSK/WPA-PSK2 encryptions, WPS

Specifications

Software

- Operation Mode: 3G/4G Router Mode, 3G/4G Router Mode with Ewan Backup, Wireless Router Mode, Wireless Router Mode with 3G/4G Backup
- Quality of Service: WMM, Bandwidth Control
- WAN Type: Dynamic IP, Static IP, PPPoE, PPTP(Dual Access), L2TP(Dual Access)
- Management: Access Control, Local Management, Remote Management
- DHCP: Server, DHCP Client List, Address Reservation
- Port Forwarding: Virtual Server, Port Triggering, UPnP, DMZ
- Dynamic DNS: DynDns, NO-IP
- VPN Server: IPSec VPN
- Access Control: Parental Control, Local Management Control, Blacklist, Whitelist
- Firewall Security: DoS, SPI Firewall, IP and MAC Address Binding
- Protocols: IPv4, IPv6 Tunnel
- USB Sharing: Supports Samba(Storage), FTP Server, Media Server, Printer Server
- Guest Network: 2.4GHz guest network x 1, 5GHz guest network x 1

Others

- Certification: CE, RoHS
- System Requirements: Microsoft Windows 98SE/NT/2000/XP/Vista™/7/8/8.1/10, MAC OS, NetWare, UNIX or Linux
Internet Explorer 11, Firefox 12.0, Chrome 20.0, Safari 4.0, or other Java-enabled browser
Cable or DSL Modem
Subscription with an internet service provider (for internet access)
- Environment: Operating Temperature: 0°C~40°C (32°F ~104°F)
Storage Temperature: -40°C~70°C (-40°F ~158°F)
Operating Humidity: 10%~90% non-condensing
Storage Humidity: 5%~90% non-condensing
- Package Contents
AC1350 3G/4G Wireless Dual Band Router TL-MR3620
Power Adapter
RJ45 Ethernet Cable
Quick Installation Guide



For more information, please visit

<http://www.tp-link.com/en/products/details/TL-MR3620.html>

or scan the QR code left

For technical support, please visit: <http://www.tp-link.com/support>

Attention: This device may only be used indoors in all EU member states and EFTA countries.

Specifications are subject to change without notice. TP-Link is a registered trademark of TP-Link Technologies Co., Ltd. Other brands and product names are trademarks or registered trademarks of their respective holders. Copyright ©2017 TP-Link Technologies Co., Ltd. All rights reserved.

TP-Link Technologies Co., Ltd.

Building 24 (floors 1, 3, 4, 5) and 28 (floors 1-4) Central Science and Technology Park, Shennan Rd, Nanshan, Shenzhen, China

www.tp-link.com

www.tp-link.com

TP-Link AC1350 3G/4G Wireless Dual Band Router TL-MR3620